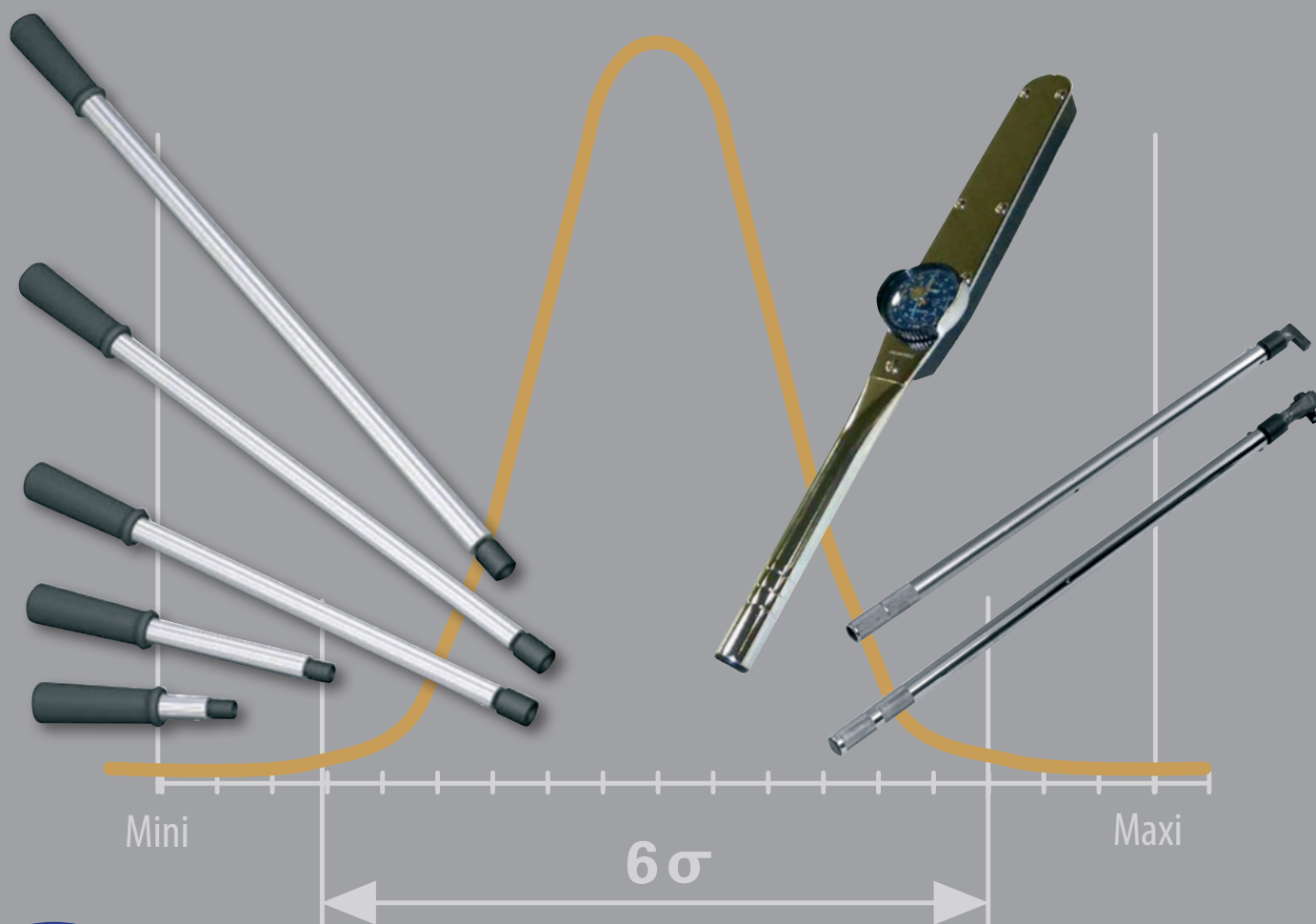




# TORQUE WRENCHES



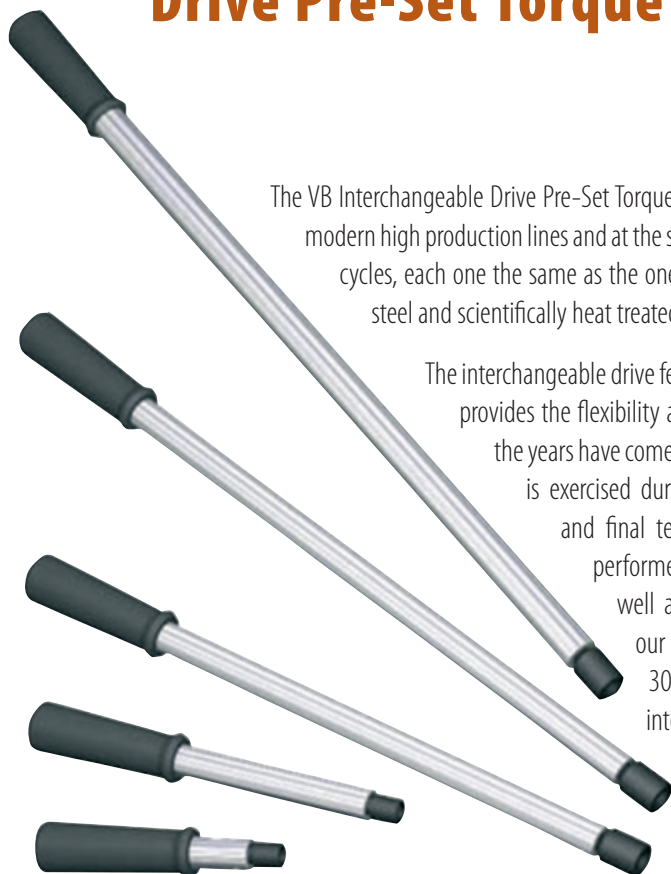
Rue de la Botte, 16 • B-5650 Yves-Gomezée

Tel.: +32 71 25 95 98 • Fax: +32 71 25 95 99 • Mail: [info@scmtools.be](mailto:info@scmtools.be) • [www.scmtools.be](http://www.scmtools.be)

## Table of contents

<b>Interchangeable Drive Pre-Set Torque Wrenches</b>	<b>3</b>
<b>Large Face Dial Indicating Torque Wrenches</b>	<b>5</b>
<b>Fixed Head Pre-Set Torque Wrenches</b>	<b>7</b>
Standard Interchangeable Drive Ends	9
Ratched drive ends	10
Plain drive ends	10
Open end "U" bottom drive ends	11
Heavy duty "U" bottom open end drive ends	11
Open end "V" bottom drive ends	12
Heavy duty "V" bottom open end drive ends	12
15" box drive ends	13
45" box drive ends	13
15" reversa-box drive ends	14
Surface box drive ends	14
6 pt. flare nut drive ends	15
12 pt. flare nut drive ends	15
Crow-ring	16
Crow-foot	17
Adaptateurs	18
Unit conversion Chart	19
Special request	20

## VB Interchangeable Drive Pre-Set Torque Wrenches



The VB Interchangeable Drive Pre-Set Torque Wrenches are designed to withstand the abuse of modern high production lines and at the same time deliver hundreds of thousands of accurate cycles, each one the same as the one before. These wrenches are made from high alloy steel and scientifically heat treated to deliver the results that are demanded of them.

The interchangeable drive feature of the Van F. Belknap Company torque wrench provides the flexibility and versatility that hundreds of our customers over the years have come to appreciate and demand. Absolute quality control is exercised during the manufacturing process, assembly process and final test and calibration operations. Hardness tests are performed to make sure the design integrity is maintained as well as metallurgical composition tests. To compliment our interchangeable drive torque wrench, we have over 300 standard drive ends available from stock, that fit into the interchangeable drive torque wrench.

### FEATURES

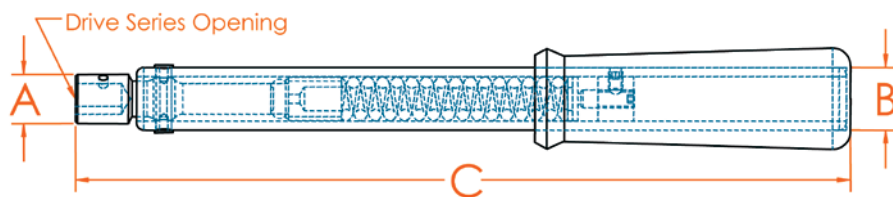
- Eleven interchangeable models
- Can be preset within  $\pm 2\%$  accuracy.
- Torques left and right handed.
- Meets or exceeds ANSI/ASME B107.14M – 1994,  $\pm 4\%$  right and  $\pm 4\%$  left.
- Hard chrome plated.
- Production line tested.
- All steel construction.
- Heat treated.
- Interchangeable drive opening.
- Locked in torque value cannot be changed or tampered with on production line.
- Torque value can be adjusted quickly in calibration lab or by on-line inspector.

**Type II - Classe C (ISO 6789)**

The interchangeable drive replacement operation is very simple: insert the replaceable head and lock it in place with a steel pin. When the drive end needs to be replaced, press the pin and the drive end is easily removed. The torque wrench features a loud audible click along with several degrees of free travel when the preset torque has been reached. It is difficult for the operator to ignore these signals which results in better torque operations being achieved. **The torque handles operate in both right and left hand directions.**

This is very important because when the torque wrench is used with an interchangeable drive end, such as the 15° offset open end drive end, the operator is able to “turn the wrench over” to utilize the 15° offset. The ability to “turn the wrench over” allows the operator to still be able to apply torque in close areas. Other torque wrenches that click in one direction only take away this important benefit from the assembly line operator.

There are 11 different models to choose from with torque outputs ranging from 1 to 600 ft. lbs. The torque values can be adjusted quickly and easily in your calibration lab. In addition to our wrenches being sealed, our exclusive side-set-locking-screw prevents any unauthorized personnel from tampering with the settings.



Model Number	Torque Range Ft-Lbs.	Torque Range Nm	Drive Series	A	B	C	Adjusting Tool Part No.	Weight
VB-5T-I **	1-5	1-7	RJ	1/16"	5/8"	6"	AT-0	6 oz.
VB-10T-I	3-9	4-13	RJ	1/16"	7/8"	6"	ATN-2	11 oz.
VB-10ST-I	7-25	9-34	RJ	1/16"	7/8"	6-1/8"	ATN-2	12 oz.
VB-10AT-I	7-25	9-34	RJ	1/16"	7/8"	7"	ATN-2	13 oz.
VB-50ST-I	10-50	13-68	RJ	1/16"	7/8"	9-1/8"	ATN-2	1.1 lbs.
VB-50T-I	10-50	13-68	RJ	1/16"	7/8"	11"	ATN-2	1.3 lbs.
VB-100ST-I	45-150	61-204	RY	15/16"	7/8"	14-1/2"	ATN-2	1.12 lbs.
VB-100T-I	45-150	61-204	RY	15/16"	7/8"	19-1/4"	ATN-3	2.25 lbs.
VB-200T-I	45-200	61-272	RY	15/16"	7/8"	23-1/4"	ATN-3	2.3 lbs.
VB-300T-I	100-300	135-406	RX	1-1/8"	1"	27-1/2"	ATN-4	3.75 lbs.
VB-600T-I **	200-600	270-813	RZ	1-5/16"	1-1/4"	55"*	ATN-4	10.6 lbs.
VB-1000T-I **	300-1000	407-1356	RZ	1-5/16"	1-1/4"	62"*		22 lbs.

\* Includes extension handle \*\* No grip supplied

## Large Face Dial Indicating Torque Wrenches

The Large Face Dial Indicating Torque Wrenches are "State of the Art" torque wrenches. Exclusive patented torsion beam design provides long life, accuracy, and reliability demanded during use. Strong alloy steels are used, along with all square drives being drop forged and carefully heat treated.

NOTE: Some wrenches have the option of adding an electric light and audible buzzer. (See chart on next page "Part No. Electric".)

An operator may elect to pre-set a torque value on the dial face of the torque wrench prior to torquing. During the torquing of the fastener, the pointer needle of the wrench makes contact with the pre-set brass contact needle and a red light and buzzer sounds indicating the pre-set torque value has been reached.



Type I - Classe B (ISO 6789)

## FEATURES

- Exclusive bi-polar dual scales, English and Metric, permits accurate reading of both scales.
- Equally accurate in both left and right hand directions.
- Torsion drive design.
- Large, easy to read dial.
- Accurate from 20% to full range.
- Meets and/or exceeds ANSI B107.14M – 1994,  $\pm 4\%$  right and  $\pm 4\%$  left.
- User assured of long life and reliability.
- Calibration to  $\pm 4\%$  traceable to National Institute of Standards and Technology (NIST) upon request.
- Available with Follower Needle.

Part No. Follower Needle	Part No. Electric	Torque Range English	Grads. English	Torque Range Metric	Grads. Metric	Drive	Length	No. of Ext. Handles	Wt. Lbs.
INCH POUND									
151LDIN	—	0-15 in-lb.	.25 in-lb.	0-18 dNm	.25 dNm	1/4"	10"	—	1
301LDIN	—	0-30 in-lb.	.5 in-lb.	0-3.5 Nm	.1 Nm	1/4"	10"	—	1
751LDIN	—	0-75 in-lb.	1 in-lb.	0-9 Nm	.2 Nm	1/4"	10"	—	1
752LDIN	—	0-75 in-lb.	1 in-lb.	0-9 Nm	.2 Nm	3/8"	10"	—	1
1502LDIN	—	0-150 in-lb.	2 in-lb.	0-18 Nm	.5 Nm	3/8"	10"	—	1
2502LDIN	—	0-250 in-lb.	5 in-lb.	0-30 Nm	.5 Nm	3/8"	10"	—	1
3002LDIN	—	0-300 in-lb.	5 in-lb.	0-35 Nm	1 Nm	3/8"	10"	—	1
6002LDIN	—	0-600 in-lb.	10 in-lb.	0-70 Nm	2 Nm	3/8"	14-7/8"	—	1-3/4
FOOT POUND									
252LDFN	—	0-25 ft-lb.	.5 ft-lb.	0-35 Nm	1 Nm	3/8"	10"	—	1
502LDFN	—	0-50 ft-lb.	1 ft-lb.	0-70 Nm	2 Nm	3/8"	14-7/8"	—	1-3/4
1003LDFN	—	0-100 ft-lb.	2 ft-lb.	0-140 Nm	2.5 Nm	1/2"	21-1/2"	—	2-3/4
1753LDFN	—	0-175 ft-lb.	5 ft-lb.	0-240 Nm	5 Nm	1/2"	21-1/2"	—	2-3/4
2503LDFN <sup>1</sup>	—	0-250 ft-lb.	5 ft-lb.	0-350 Nm	10 Nm	1/2"	21-1/2"	—	2-3/4
3504LDFN <sup>1</sup>	—	0-350 ft-lb.	10 ft-lb.	0-480 Nm	10 Nm	3/4"	27-7/8"	—	5-3/4
6004LDFN <sup>1</sup>	6004LDFE <sup>1</sup>	0-600 ft-lb.	10 ft-lb.	0-800 Nm	20 Nm	3/4"	46-1/2"	1	9-1/4
10005LDFN	10005LDFE	0-1000 ft-lb.	20 ft-lb.	0-1400 Nm	25 Nm	1"	74"	1	30
—	20005LDFEX <sup>2</sup>	0-2000 ft-lb.	40 ft-lb.	0-2800 Nm	50 Nm	1"	122"	5	47

<sup>1</sup> Available with wire guard. To order wire guard, add «W» to the end of the part number. Example: 3504LDFNW

<sup>2</sup> «T» style wrench, 1» drive female head for use with torque multiplier

## Fixed Head Pre-Set Torque Wrenches

The Fixed Head Pre-Set Torque Wrenches are designed for use on production lines and other applications where a specific torque is required for repetitive operations. The design, fabrication and materials used have been developed in coordination with major manufacturers in actual production use. Ratchet Head, Plain Head and Interchangeable models available.

Our own metrology lab tests have shown that repeatability and accuracy are maintained after hundreds of thousands of cycles. Additionally, our customers over the years have proven our test reports through actual production line and maintenance use.



<b>Maximum torque output for square drive</b>	# 1/4" = 30 Nm
	# 3/8" = 135 Nm
	# 1/2" = 340 Nm
	# 3/4" = 850 Nm
	# 1" = 2100 Nm

**Type II - Classe C (ISO 6789)**



## FEATURES

- Torques in both left and right hand directions.  
Automatic re-set when force on handle is released.
- Torque-limiting positive-sensory “click” when pre-set torque is reached.
- Rubber handle for a comfortable, safe grip.
- Can be preset to  $\pm 2\%$  accuracy.
- Tamper proof torque setting for production use.
- Torque values can be calibrated in English and Metric settings.
- All parts are made of alloy steel for maximum life and calibration retention.
- Duratorque high duty alloy steel spring for accuracy and long life.
- Belknap industrial grade double pawl ratchet for trouble-free service.
- Square drives meet industrial requirements and government specifications.
- Meets or exceeds ANSI/ASME B107.14M – 1994,  $\pm 4\%$  right and 4% left.

Model Number	Torque Range Ft-Lbs.	Torque Range In-Lbs.	Torque Range M-Kg.	Torque Range Nm	Square Drive Size/Type	Overall Length	Weight Lbs.	Adjusting Tool Part No.
5T-1P	1-5	12-60	.1-.7	2-7	1/4" Plain	7"	0,50	AT-0
5T-1R	1-5	12-60	.1-.7	2-7	1/4" Ratchet	7"	0,50	AT-0
5T-2P	1-5	12-60	.1-.7	2-7	3/8" Plain	7"	0,50	AT-0
5T-2R	1-5	12-60	.1-.7	2-7	3/8" Ratchet	7"	0,50	AT-0
10T-2P	3-9	36-108	.42-1.24	4-13	3/8" Plain	9"	0,75	AT-1
10T-2R	3-9	36-108	.42-1.24	4-13	3/8" Ratchet	9-1/4"	0,83	AT-1
10AT-2P	7-25	84-300	.96-3.4	9-34	3/8" Plain	10"	0,75	AT-1
10AT-2R	7-25	84-300	.96-3.4	9-34	3/8" Ratchet	10-1/4"	0,83	AT-1
50T-2P	10-50	120-600	1-7	14-70	3/8" Plain	11"	1,25	AT-2
50T-2R	10-50	120-600	1-7	14-70	3/8" Ratchet	11-1/2"	1,50	AT-2
100T-3P	45-150	540-1800	6-20	60-200	1/2" Plain	18-3/4"	2,25	AT-3
100T-3R	45-150	540-1800	6-20	60-200	1/2" Ratchet	19-3/4"	2,75	AT-3
200T-3R	45-200	540-2400	6-27	60-270	1/2" Ratchet	23-3/4"	3,00	AT-3
300T-4P **	100-300	1200-3600	14-42	140-420	3/4" Plain	24"	4,00	AT-4
300T-4R **	100-300	1200-3600	14-42	140-420	3/4" Ratchet	28"	4,75	AT-4
600T-4P **	200-600	2400-7200	28-83	280-830	3/4" Plain	49" *	10,00	AT-5
600T-4R **	200-600	2400-7200	28-83	280-830	3/4" Ratchet	52" *	22,00	AT-5

\* Includes Extension Handle

\*\* No Grip



## Standard Interchangeable Drive Ends

Torque capacity of drive ends may be limited by square drive size and/or by opening sizes. Please check your requirements.

Van F. Belknap Drive Ends are made with one thing in mind: **DURABILITY**

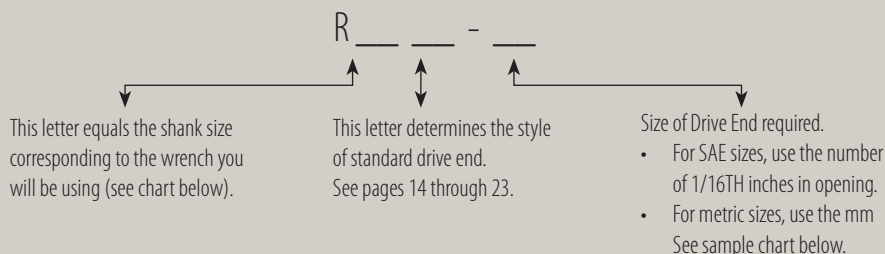
We have been making drive ends to be used on different types of assembly lines for over 35 years.

Whether you need them

- extra thick or thin,
- long or short,
- straight or off-set, or
- with a special configuration or opening,

our engineers and machinists will make the drive end that will work for you. Further, on sizes not shown we will be happy to work with you. Please call our engineering department for assistance.

### HOW TO ORDER STANDARD INTERCHANGEABLE DRIVE ENDS



Drive Series	Shank Size	Max Torque Output
VB-ST-I	J	5 ft. lbs. (7 Nm)
VB-10T-I	J	9 ft. lbs. (13 Nm)
VB-10ST-I	J	25 ft. lbs. (34 Nm)
VB-10AT-I	J	25 ft. lbs. (34 Nm)
VB-50ST-I	J	50 ft. lbs. (68 Nm)
VB-50T-I	J	50 ft. lbs. (68 Nm)
VB-100ST-I	Y	150 ft. lbs. (204 Nm)
VB-100T-I	Y	150 ft. lbs. (204 Nm)
VB-200T-I	Y	200 ft. lbs. (272 Nm)
VB-300T-I	X	300 ft. lbs. (406 Nm)
VB-600T-I	Z	600 ft. lbs. (813 Nm)

SAE Sizes	METRIC Sizes
- 6 = 3/8"	- 6M = 6mm
- 7 = 7/16"	- 7M = 7mm
- 8 = 1/2"	- 8M = 8mm
- 9 = 9/16"	- 9M = 9mm
- 10 = 5/8"	- 10M = 10mm
- 32 = 2"	- 11M = 11mm
etc.	etc.

#### SAMPLE REQUIREMENT:

9/16" Open End, 35 ft.-lbs. of Torque  
 > Simply order: **RJE-9 with 50T-I**

#### SAMPLE REQUIREMENT:

32mm 12pt Box 15° Offset, 240 Nm of Torque  
 > Simply order: **RYB-32M with 200T-I**

Torque capacity of drive ends may be limited by square drive size and/or by opening sizes. Please check your requirements.

Drive Series	Shank Size
VB-5T-I	J
VB-10T-I	J
VB-10ST-I	J
VB-10AT-I	J
VB-50ST-I	J
VB-50T-I	J
VB-100ST-I	Y
VB-100T-I	Y
VB-200T-I	Y
VB-300T-I	X
VB-600T-I	Z

In addition to the Standard Interchangeable Drive Ends (replaceable heads), we also make special configurations for "difficult to reach" operations. Our specials can be made to suit your requirements.

<b>Maximum torque output for square drive</b>	# 1/4" = 30 Nm
	# 3/8" = 135 Nm
	# 1/2" = 340 Nm
	# 3/4" = 850 Nm
	# 1" = 2100 Nm



For sockets see  
[www.koken-tool.co.jp/en](http://www.koken-tool.co.jp/en)  
[www.stahlwille.com/](http://www.stahlwille.com/)

For **crowfoot** see page 17.

## RATCHET DRIVE ENDS



Part No.	Square Drive
RJD-4	1/4"
RJD-6	3/8"
RJD-8	1/2"
<b>RYD-8</b>	<b>1/2"</b>
RXD-8	1/2"
RXD-12	3/4"
RZD-12	3/4"
RZD-16	1"



Maximum torque output for RXD-8 is 180 ft-lbs.

### Also available w/ PIN drive:

Part No.	Square Drive
VB-9012019 (RJD-6)	3/8"
VB-9012020 (RJD-8)	1/2"
VB-9012021 (RYD-8)	1/2"

## PLAIN DRIVE ENDS



Part No.	Square Drive
RJP-4	1/4"
RJP-6	3/8"
RJP-8	1/2"
<b>RYP-8</b>	<b>1/2"</b>
<b>RYP-12</b>	<b>3/4"</b>
RXP-8	1/2"
RXP-12	3/4"
RXP-16	1"
RZP-12	3/4"
RZP-16	1"

## OPEN END "U" BOTTOM DRIVE ENDS

Part No.	Opening
RJUE-4	1/4"
RJUE-5	5/16"
RJUE-6	3/8"
RJUE-7	7/16"
RJUE-8	1/2"
RJUE-9	9/16"
RJUE-10	5/8"
RJUE-11	11/16"
RJUE-12	3/4"
RJUE-13	13/16"
RJUE-14	7/8"
RJUE-15	15/16"
RJUE-16	1"
RJUE-17	1-1/16"
RJUE-18	1-1/8"
RJUE-19	1-3/16"
RJUE-20	1-1/4"
RJUE-21	1-5/16"
RJUE-22	1-3/8"
RJUE-24	1-1/2"
RJUE-25	1-9/16"
RJUE-26	1-5/8"
RJUE-27	1-11/16"
RJUE-28	1-3/4"
RJUE-29	1-13/16"
RJUE-30	1-7/8"

Part No.	Opening
RYUE-10	5/8"
RYUE-11	11/16"
RYUE-12	3/4"
RYUE-13	13/16"
RYUE-14	7/8"
RYUE-15	15/16"
RYUE-16	1"
RYUE-17	1-1/16"
RYUE-18	1-1/8"
RYUE-19	1-3/16"
RYUE-20	1-1/4"
RYUE-21	1-5/16"
RYUE-22	1-3/8"
RYUE-24	1-1/2"
RYUE-25	1-9/16"
RYUE-26	1-5/8"
RYUE-27	1-11/16"
RYUE-28	1-3/4"
RYUE-29	1-13/16"
RYUE-30	1-7/8"
RYUE-31	1-15/16"
RYUE-32	2"
RYUE-33	2-1/16"
RYUE-34	2-1/8"
RYUE-35	2-3/16"
RYUE-36	2-1/4"

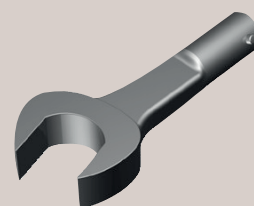


Part No.	Opening
RJUE-6M	6mm
RJUE-7M	7mm
RJUE-8M	8mm
RJUE-9M	9mm
RJUE-10M	10mm
RJUE-11M	11mm
RJUE-12M	12mm
RJUE-13M	13mm
RJUE-14M	14mm
RJUE-15M	15mm
RJUE-16M	16mm
RJUE-17M	17mm
RJUE-18M	18mm
RJUE-19M	19mm
RJUE-20M	20mm
RJUE-21M	21mm
RJUE-22M	22mm
RJUE-23M	23mm
RJUE-24M	24mm
RJUE-27M	27mm
RJUE-28M	28mm
RJUE-29M	29mm
RJUE-30M	30mm

**MOST SIZES NOT SHOWN CAN BE MADE.**

**Please call for assistance and we will respond immediately.**  
**Torque capacity of drive ends may be limited by square drive size and/or by opening sizes. Please check your requirements.**

## HEAVY DUTY «U» BOTTOM OPEN END DRIVE ENDS



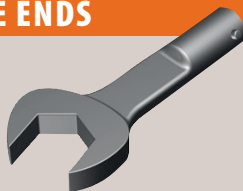
Part No.	Opening
RJUH-6	3/8"
RJUH-7	7/16"
RJUH-8	1/2"
RJUH-9	9/16"
RJUH-10	5/8"
RJUH-11	11/16"
RJUH-12	3/4"
RJUH-14	7/8"
RJUH-17	1-1/16"
RJUH-18	1-1/8"
RJUH-20	1-1/4"

## OPEN END "V" BOTTOM DRIVE ENDS

Part No.	Opening
RJE-4	1/4"
RJE-5	5/16"
RJE-6	3/8"
RJE-7	7/16"
RJE-8	1/2"
RJE-9	9/16"
RJE-10	5/8"
RJE-11	11/16"
RJE-12	3/4"
RJE-13	13/16"
RJE-14	7/8"
RJE-15	15/16"
RJE-16	1"
RJE-17	1-1/16"
RJE-18	1-1/8"
RJE-20	1-1/4"
RJE-21	1-5/16"
RJE-22	1-3/8"

In addition to the Standard Interchangeable Drive Ends (replaceable heads), we also make special configurations for "difficult to reach" operations. Our specials can be made to suit your requirements.

Part No.	Opening
RYE-12	3/4"
RYE-13	13/16"
RYE-14	7/8"
RYE-15	15/16"
RYE-16	1"
RYE-17	1-1/16"
RYE-18	1-1/8"
RYE-20	1-1/4"
RYE-21	1-5/16"
RYE-22	1-3/8"
RYE-23	1-7/16"
RYE-26	1-5/8"
RYE-28	1-3/4"
RYE-30	1-7/8"
RYE-32	2"
RXE-18	1-1/8"
RXE-19	1-3/16"
RXE-20	1-1/4"
RXE-21	1-5/16"
RXE-22	1-3/8"
RXE-23	1-7/16"
RXE-24	1-1/2"
RXE-26	1-5/8"
RXE-27	1-11/16"
RXE-28	1-3/4"
RXE-30	1-7/8"
RXE-24M	24mm
RXE-30M	30mm



Part No.	Opening
RJE-6M	6mm
RJE-7M	7mm
RJE-8M	8mm
RJE-9M	9mm
RJE-10M	10mm
RJE-11M	11mm
RJE-12M	12mm
RJE-13M	13mm
RJE-14M	14mm
RJE-15M	15mm
RJE-16M	16mm
RJE-17M	17mm
RJE-18M	18mm
RJE-19M	19mm
RJE-20M	20mm
RJE-21M	21mm

## HEAVY DUTY «V» BOTTOM OPEN END DRIVE ENDS



Part No.	Opening
RJH-6	3/8"
RJH-7	7/16"
RJH-8	1/2"
RJH-9	9/16"
RJH-10	5/8"
RJH-11	11/16"
RJH-12	3/4"
RJH-14	7/8"

**MOST SIZES NOT SHOWN CAN BE MADE.**

**Please call for assistance and we will respond immediately.**

**Torque capacity of drive ends may be limited by square drive size and/or by opening sizes. Please check your requirements.**

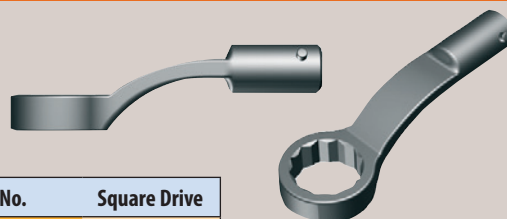
## 15° BOX DRIVE ENDS



Part No.	Square Drive
RJB-6	3/8"
RJB-7	7/16"
RJB-8	1/2"
RJB-9	9/16"
RJB-10	5/8"
RJB-11	11/16"
RJB-12	3/4"
RJB-14	7/8"
RJB-15	15/16"
RJB-16	1"
RYB-10	5/8"
RYB-11	11/16"
RYB-12	3/4"
RYB-13	13/16"
RYB-14	7/8"
RYB-15	15/16"
RYB-16	1"
RYB-18	1-1/8"
RXB-21	1-5/16"
RXB-22	1-3/8"
RXB-23	1-7/16"
RXB-24	1-1/2"

Part No.	Square Drive
RJB-6M	6mm
RJB-7M	7mm
RJB-8M	8mm
RJB-9M	9mm
RJB-10M	10mm
RJB-11M	11mm
RJB-12M	12mm
RJB-13M	13mm
RJB-14M	14mm
RJB-15M	15mm
RJB-16M	16mm
RJB-17M	17mm
RJB-18M	18mm
RJB-19M	19mm
RJB-20M	20mm
RJB-21M	21mm
RJB-22M	22mm
RJB-23M	23mm

## 45° BOX DRIVE ENDS



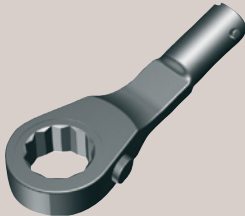
Part No.	Square Drive
RJBX-6	3/8"
RJBX-7	7/16"
RJBX-8	1/2"
RJBX-9	9/16"
RJBX-10	5/8"
RJBX-11	11/16"
RJBX-12	3/4"
RJBX-14	7/8"
RJBX-15	15/16"
RJBX-16	1"
RYBX-10	5/8"
RYBX-11	11/16"
RYBX-12	3/4"
RYBX-14	7/8"
RYBX-15	15/16"
RYBX-16	1"
RYBX-17	1-1/8"
RXBX-21	1-5/16"
RXBX-22	1-3/8"
RXBX-23	1-7/16"
RXBX-24	1-1/2"

Part No.	Square Drive
RJBX-6M	6mm
RJBX-7M	7mm
RJBX-8M	8mm
RJBX-9M	9mm
RJBX-10M	10mm
RJBX-11M	11mm
RJBX-12M	12mm
RJBX-13M	13mm
RJBX-14M	14mm
RJBX-15M	15mm
RJBX-16M	16mm
RJBX-17M	17mm
RJBX-18M	18mm
RJBX-19M	19mm
RJBX-20M	20mm
RJBX-21M	21mm
RJBX-22M	22mm
RJBX-24M	24mm
RJBX-26M	26mm
RJBX-30M	30mm
RJBX-32M	32mm

**MOST SIZES NOT SHOWN CAN BE MADE.**

Please call for assistance and we will respond immediately.  
Torque capacity of drive ends may be limited by square drive size and/or by opening sizes. Please check your requirements.

## 15° REVERSA-BOX DRIVE ENDS

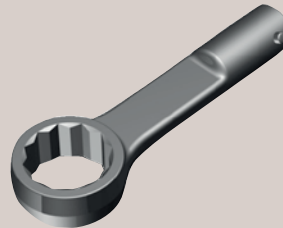


Part No.	Square Drive
RJBR-6	3/8"
RJBR-7	7/16"
RJBR-8	1/2"
RJBR-9	9/16"
RJBR-10	5/8"
RJBR-11	11/16"
RJBR-12	3/4"
RJBR-13	13/16"
RJBR-14	7/8"
RJBR-15	15/16"
RJBR-8M	8mm
RJBR-9M	9mm
RJBR-10M	10mm
RJBR-11M	11mm
RJBR-13M	13mm
RJBR-14M	14mm
RJBR-15M	15mm
RJBR-16M	16mm
RJBR-17M	17mm
RJBR-18M	18mm
RJBR-19M	19mm
RJBR-20M	20mm
RJBR-21M	21mm
RJBR-22M	22mm
RJBR-24M	24mm

**Note:** Due to heat-treat limitations, the new 15° Reversa-Box Drive Ends (RBR Series) can not handle large torque values. Please call for availability.



## SURFACE BOX DRIVE ENDS



Part No.	Square Drive
RJBS-6	3/8"
RJBS-7	7/16"
RJBS-8	1/2"
RJBS-9	9/16"
RJBS-10	5/8"
RJBS-11	11/16"
RJBS-12	3/4"
RJBS-14	7/8"
RJBS-15	15/16"
RJBS-16	1"
RYBS-10	5/8"
RYBS-11	11/16"
RYBS-12	3/4"
RYBS-13	13/16"
RYBS-14	7/8"
RYBS-15	15/16"
RYBS-16	1"
RYBS-17	17/16"
RYBS-18	1-1/8"
RXBS-21	1-5/16"
RXBS-22	1-3/8"
RXBS-23	1-7/16"
RXBS-24	1-1/2"
RXBS-26	1-5/8"

**MOST SIZES NOT SHOWN CAN BE MADE.**

Please call for assistance and we will respond immediately. Torque capacity of drive ends may be limited by square drive size and/or by opening sizes. Please check your requirements.

## 6 PT. FLARE NUT DRIVE ENDS



Part No.	Opening
RJC-6	3/8"
RJC-7	7/16"
RJC-8	1/2"
RJC-9	9/16"
RJC-10	5/8"
RJC-11	11/16"
RJC-12	3/4"
RJC-14	7/8"
RJC-16	1"
RJC-17	1-1/16"
RJC-18	1-1/8"
RJC-7M	7mm
RJC-8M	8mm
RJC-9M	9mm
RJC-10M	10mm
RJC-11M	11mm
RJC-12M	12mm
RJC-13M	13mm
RJC-14M	14mm
RJC-15M	15mm
RJC-16M	16mm
RJC-17M	17mm
RJC-18M	18mm

## 12 PT. FLARE NUT DRIVE ENDS



Part No.	Opening
RJR-6	3/8"
RJR-7	7/16"
RJR-8	1/2"
RJR-9	9/16"
RJR-10	5/8"
RJR-11	11/16"
RJR-12	3/4"
RJR-14	7/8"
RJR-15	15/16"
RJR-16	1"
RJR-17	1-1/16"
RJR-18	1-1/8"
RYR-12	3/4"
RYR-14	7/8"
RYR-15	5/16"
RYR-16	1"
RYR-18	1-1/8"
RYR-20	1-1/4"
RYR-21	1-5/16"
RYR-22	1-3/8"
RYR-24	1-1/2"
RYR-26	1-5/8"

Part No.	Opening
RJR-9M	9mm
RJR-10M	10mm
RJR-11M	11mm
RJR-12M	12mm
RJR-13M	13mm
RJR-14M	14mm
RJR-15M	15mm
RJR-16M	16mm
RJR-17M	17mm
RJR-18M	18mm
RJR-19M	19mm
RJR-20M	20mm
RJR-21M	21mm
RJR-22M	22mm
RYR-15M	15mm
RYR-17M	17mm
RYR-19M	19mm
RYR-21M	21mm

**MOST SIZES NOT SHOWN CAN BE MADE.**

**Please call for assistance and we will respond immediately.**

**Torque capacity of drive ends may be limited by square drive size and/or by opening sizes. Please check your requirements.**



## CROW-RING



Code	mm	Opening
01190008	8	1/4"
01190009	9	1/4"
01190010	10 <sup>1)</sup>	1/4"
01190011	11	1/4"
01190012	12 <sup>1)</sup>	1/4"
01190013	13	1/4"
01190014	14 <sup>1)</sup>	1/4"
02190015	15	3/8"
02190016	16	3/8"
02190017	17 <sup>2)</sup>	3/8"
02190018	18	3/8"
02190019	19 <sup>2)</sup>	3/8"
02190020	20	3/8"
02190021	21	3/8"
02190022	22 <sup>2)</sup>	3/8"
02190023	23	3/8"
02190024	24 <sup>2)</sup>	3/8"
02190025	25	3/8"
02190026	26	3/8"
02190027	27	3/8"
02191027	27DC <sup>3)</sup>	3/8"
03190028	28	1/2"
03190030	30	1/2"
03190032	32	1/2"
03190034	34	1/2"
03190036	36	1/2"
03190038	38	1/2"
03190040	40	1/2"
03190041	41	1/2"
03190042	42	1/2"
03190046	46	1/2"
03190050	50	1/2"

Code	mm	Opening
01490024	3/8 <sup>1)</sup>	1/4"
01490028	7/16	1/4"
01490032	1/2	1/4"
01490034	9/16	1/4"
02490036	5/8	3/8"
02490038	11/16	3/8"
02490040	3/4	3/8"
02490042	13/16	3/8"
02490044	7/8	3/8"
02490046	15/16	3/8"
02490048	1	3/8"
02490050	1 1/16	3/8"
03490052	1 1/8	1/2"
03490056	1 1/4	1/2"
03490058	1 5/16	1/2"
03490060	1 3/8	1/2"
03490062	1 7/16	1/2"
03490064	1 1/2	1/2"
03490065	1 9/16	1/2"
03490066	1 5/8	1/2"
03490068	1 3/4	1/2"
03490069	1 13/16	1/2"
03490072	2	1/2"
03490076	2 1/4	1/2"
03490077	2 5/16	1/2"
03490078	2 3/8	1/2"

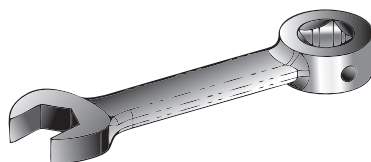
## CROW-FOOT



Code	mm	Opening
01200008	8	1/4"
01200009	9	1/4"
01200010	10	1/4"
02200011	11	3/8"
02200012	12	3/8"
02200013	13	3/8"
02200014	14	3/8"
02200015	15	3/8"
02200016	16	3/8"
02200017	17	3/8"
02200018	18	3/8"
02200019	19	3/8"
02200020	20	3/8"
02200021	21	3/8"
02200022	22	3/8"
02200023	23	3/8"
02200024	24	3/8"
02200025	25	3/8"
02200026	26	3/8"
02200027	27	3/8"
02200028	28	3/8"
02200030	30	3/8"
02200032	32	3/8"
02200034	34	3/8"
02200036	36	3/8"
02200040	40	3/8"
02200041	41	3/8"
02200042	42	3/8"
02200046	46	3/8"
02200050	50	3/8"

Code	mm	Opening
01500024	3/8	1/4"
02500028	7/16	3/8"
02500032	1/2	3/8"
02500034	9/16	3/8"
02500036	5/8	3/8"
02500040	3/4	3/8"
02500042	13/16	3/8"
02500044	7/8	3/8"
02500048	1	3/8"
02500050	1 1/16	3/8"
02500052	1 1/8	3/8"
02500054	1 3/16	3/8"
02500056	1 1/4	3/8"
02500058	1 5/16	3/8"
02500060	1 3/8	3/8"
02500062	1 7/16	3/8"
02500064	1 1/2	3/8"
02500065	1 9/16	3/8"
02500066	1 5/8	3/8"
02500067	1 11/16	3/8"
02500068	1 3/4	3/8"
02500070	1 7/8	3/8"
02500072	2	3/8"
02500074	2 1/8	3/8"
02500076	2 1/4	3/8"
02500078	2 3/8	1/2"

## ADAPTATEURS



PART # 1/2	U-OE SIZE
VB-0804010 -10	5/8"
VB-0804010 -11	11/16"
VB-0804010 -12	3/4"
VB-0804010 -13	13/16"
VB-0804010 -14	7/8"
VB-0804010 -15	15/16"
VB-0804010 -16	1"
VB-0804010 -17	1-1/16"
VB-0804010 -18	1-1/8"
VB-0804010 -20	1-1/4"
VB-0804010 -21	1-5/16"
VB-0804010 -22	1-3/8"
VB-0804010 -23	1-7/16"
VB-0804010 -24	1-1/2"
VB-0804010 -26	1-5/8"
VB-0804010 -27	1-11/16"
VB-0804010 -28	1-3/4"
VB-0804010 -29	1-13/16"
VB-0804010 -30	1-7/8"
VB-0804010 -32	2"
VB-0804010 -33	2-1/16"
VB-0804010 -34	2-1/8"
VB-0804010 -35	2-3/16"
VB-0804010 -36	2-1/4"



**Note:** The 1/2" female sq. dr. will limit the output of torque to 250 Ft Lbs

## Unit Conversion Chart

inch	mm
	0.01969 0.50000
1/32	0.03125 0.79375
	0.03937 <b>1 mm</b>
<b>1/16</b>	0.06250 1.58750
	0.07874 <b>2 mm</b>
3/32	0.09375 2.38125
	0.11811 <b>3 mm</b>
<b>1/8</b>	0.12500 3.17500
5/32	0.15625 3.96875
	0.15748 <b>4 mm</b>
<b>3/16</b>	0.18750 4.76250
	0.19685 <b>5 mm</b>
7/32	0.21875 5.55625
	0.23622 <b>6 mm</b>
<b>1/4</b>	0.25000 6.35000
	0.27559 <b>7 mm</b>
9/32	0.28125 7.14375
<b>5/16</b>	0.31250 7.93750
	0.31496 <b>8 mm</b>
11/32	0.34375 8.73125
	0.35433 <b>9 mm</b>
<b>3/8</b>	0.37500 9.52500
	0.39370 <b>10 mm</b>
13/32	0.40625 10.31875
	0.43307 <b>11 mm</b>
<b>7/16</b>	0.43750 11.11250
15/32	0.46875 11.90625
	0.47244 <b>12 mm</b>
<b>1/2</b>	0.50000 12.70000

inch	mm
	0.51181 <b>13 mm</b>
17/32	0.53125 13.49375
	0.55118 <b>14 mm</b>
<b>9/16</b>	0.56250 14.28750
	0.59055 <b>15 mm</b>
19/32	0.59375 15.08125
<b>5/8</b>	0.62500 15.87500
	0.62992 <b>16 mm</b>
21/32	0.65625 16.66875
	0.66929 <b>17 mm</b>
<b>11/16</b>	0.68750 17.46250
	0.70866 <b>18 mm</b>
23/32	0.71875 18.25625
	0.74803 <b>19 mm</b>
<b>3/4</b>	0.75000 19.05000
25/32	0.78125 19.84375
	0.78740 <b>20 mm</b>
<b>13/16</b>	0.81250 20.63750
	0.82677 <b>21 mm</b>
27/32	0.84375 21.43125
	0.86614 <b>22 mm</b>
<b>7/8</b>	0.87500 22.22500
	0.90551 <b>23 mm</b>
29/32	0.90625 23.01875
<b>15/16</b>	0.93750 23.81250
	0.94488 <b>24 mm</b>
31/32	0.96875 24.60625
	0.98425 <b>25 mm</b>
<b>1</b>	1.00000 25.40000

to convert to **ft-lb**, multiply:  
**g-cm** x 0.000072330  
**kg-m** x 7.2330  
**Nm** x 0.73756  
**in-oz** x 0.0052083  
**in-lb** x 0.083333

to convert to **g-cm**, multiply:  
**ft-lb** x 13826  
**kg-m** x 100000  
**Nm** x 10197  
**in-oz** x 72.01  
**in-lb** x 1152

to convert to **kg-m**, multiply:  
**ft-lb** x 0.1383  
**g-cm** x 0.000010004  
**Nm** x 0.10197  
**in-oz** x 0.00072008  
**in-lb** x 0.011525

to convert to **N-m**, multiply:  
**ft-lb** x 1.3558  
**g-cm** x 0.000098067  
**kg-m** x 9.8067  
**in-oz** x 0.0070616  
**in-lb** x 0.112985

to convert to **in-oz**, multiply:  
**ft-lb** x 192  
**g-cm** x 0.013887  
**kg-m** x 1388.74  
**Nm** x 141.61  
**in-lb** x 16

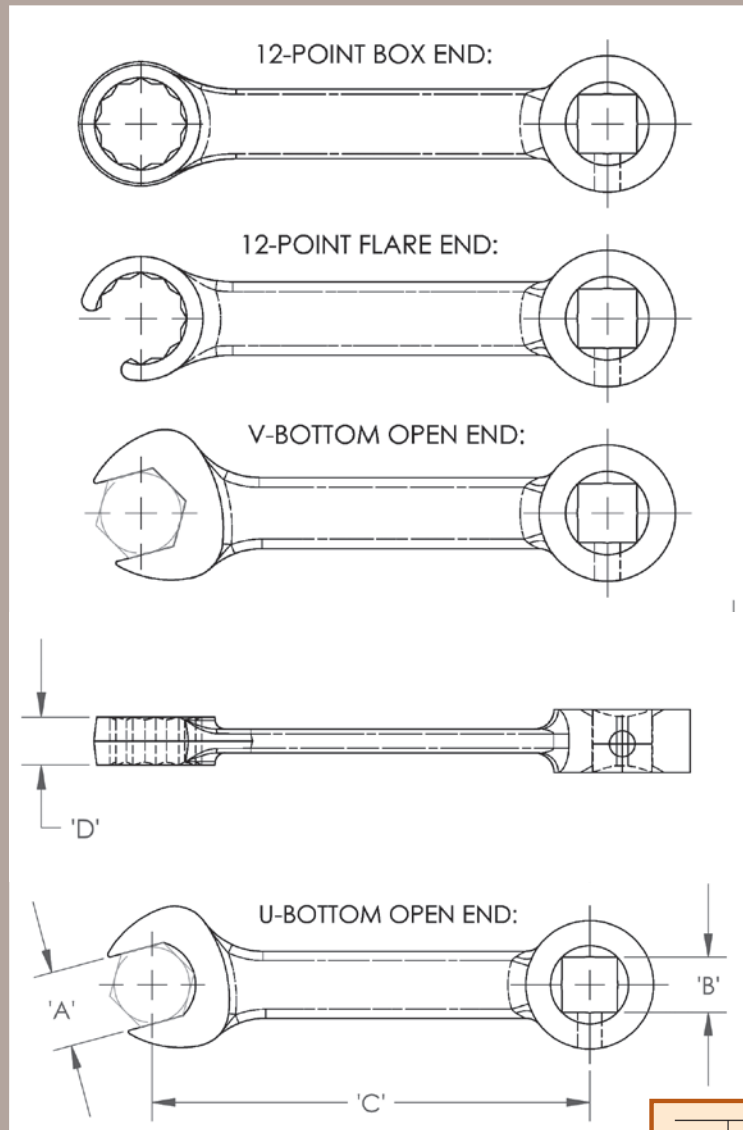
1.02362	<b>26 mm</b>
1.06299	<b>27 mm</b>
1.10236	<b>28 mm</b>
1.14173	<b>29 mm</b>
1.18110	<b>30 mm</b>
1.22047	<b>31 mm</b>
1.25984	<b>32 mm</b>
1.29921	<b>33 mm</b>
1.33858	<b>34 mm</b>
1.37795	<b>35 mm</b>
1.41732	<b>36 mm</b>
1.45669	<b>37 mm</b>
1.49606	<b>38 mm</b>
1.53543	<b>39 mm</b>
1.57480	<b>40 mm</b>
1.61417	<b>41 mm</b>

1.65354	<b>42 mm</b>
1.69291	<b>43 mm</b>
1.73228	<b>44 mm</b>
1.77165	<b>45 mm</b>
1.81102	<b>46 mm</b>
1.85039	<b>47 mm</b>
1.88976	<b>48 mm</b>
1.92913	<b>49 mm</b>
1.96850	<b>50 mm</b>
2.00787	<b>51 mm</b>
2.04724	<b>52 mm</b>
2.08661	<b>53 mm</b>
2.12598	<b>54 mm</b>
2.16535	<b>55 mm</b>
2.20472	<b>56 mm</b>
2.24409	<b>57 mm</b>

2.28346	<b>58 mm</b>
2.32283	<b>59 mm</b>
2.36220	<b>60 mm</b>
2.40157	<b>61 mm</b>
2.44094	<b>62 mm</b>
2.48031	<b>63 mm</b>
2.51969	<b>64 mm</b>
2.55906	<b>65 mm</b>
2.59843	<b>66 mm</b>
2.63780	<b>67 mm</b>
2.67717	<b>68 mm</b>
2.71654	<b>69 mm</b>
2.75591	<b>70 mm</b>
2.79528	<b>71 mm</b>
2.83465	<b>72 mm</b>
2.87402	<b>73 mm</b>

to convert to **in-lb**, multiply:  
**ft-lb** x 12  
**g-cm** x 0.00086796  
**kg-m** x 86.7962  
**Nm** x 8.8508  
**in-oz** x 0.0625

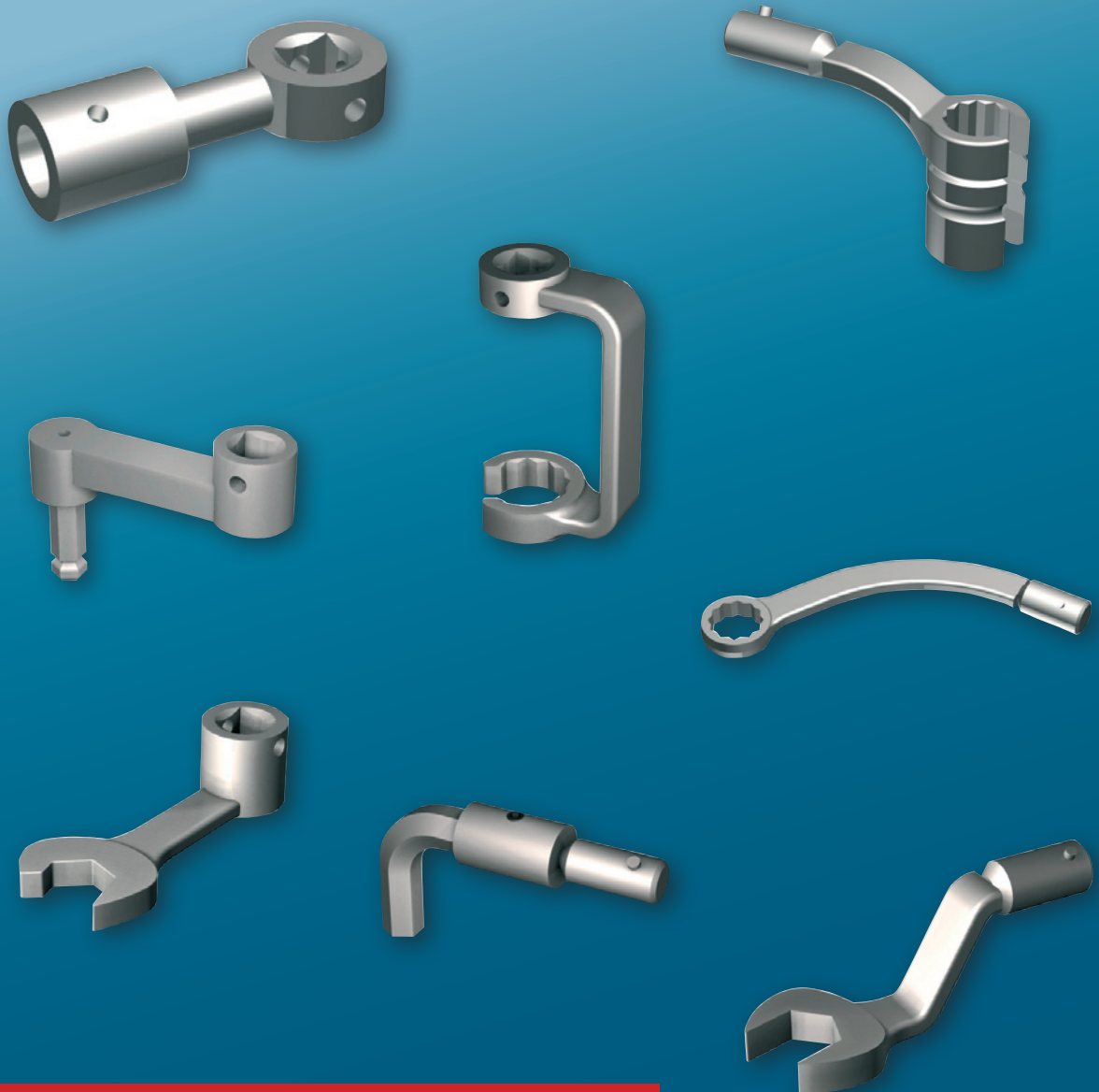
## SPECIAL REQUEST



Lead time: 3-4 weeks A.R.O.

DIM	DESCRIPTION	VALUE
A	FASTENER SIZE (ACROSS THE FLATS)	
B	SQUARE DRIVE SIZE (3/8", 1/2", 3/4", OR 1")	
C	CENTER TO CENTER	
D	HEAD THICKNESS (BLANK FOR DEFAULT)	
	END TYPE {6- OR 12- POINT BOX OR FLARE, V-BOTTOM, U-BOTTOM, SPEEDER, ETC.}	
	TORQUE VALUE REQ'D.	

CALL US IF YOU HAVE ANY REQUIREMENTS THAT ARE NOT COVERED HERE SUCH AS A SPECIAL OFFSET, ANGLE OR FINISH.



**MOST SIZES NOT SHOWN CAN BE MADE.**  
Please call for assistance and we will respond immediately.  
Torque capacity of drive ends may be limited by square drive size and/or by opening sizes. Please check your requirements.



●  
**INDUSTRIAL PNEUMATIC TOOLS  
AND ACCESSORIES**

●  
**TORQUE TOOLS**

●  
**BALANCER TOOLS**

●  
**REPAIR SERVICE**

**SERVICE VENTE ET APRÈS VENTE ■ UNE ÉQUIPE À L'ÉCOUTE DE VOS BESOINS**

Rue de la Botte, 16 • B-5650 Yves-Gomezée

**Tel.: +32 71 25 95 98 • Fax: +32 71 25 95 99**

**Mail: [info@scmtools.be](mailto:info@scmtools.be) • [www.scmtools.be](http://www.scmtools.be)**